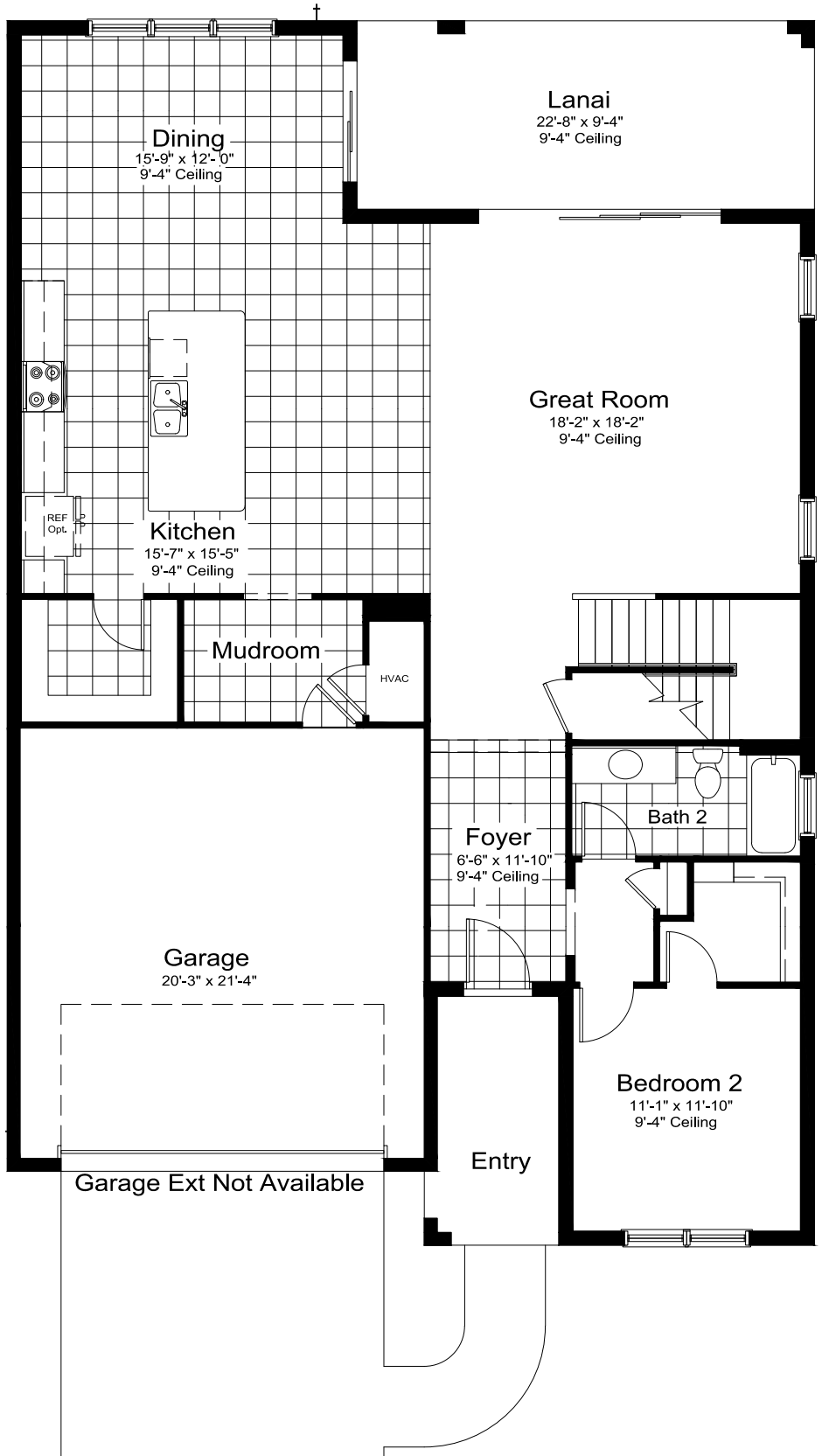
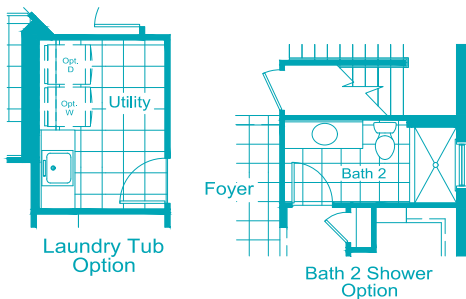
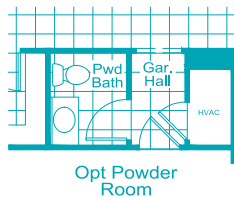
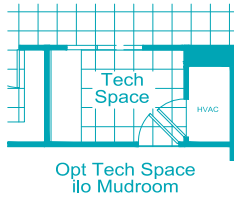
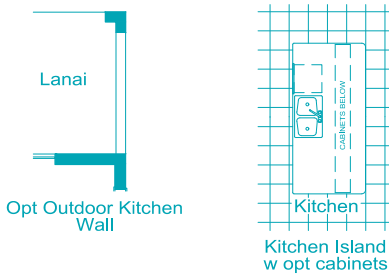
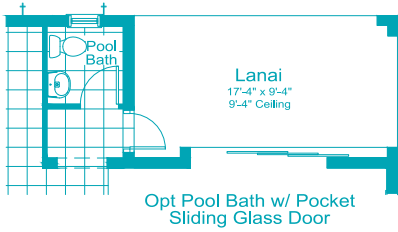


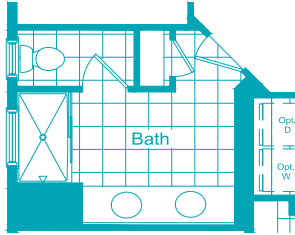
4 Bedrooms, 3 Baths, 2-Car Garage

Living Area 3,486 Sq. Ft.
 Garage 454 Sq. Ft.
 Lanai 212 Sq. Ft.
 Entry 77 Sq. Ft.
 Total Area 4,229 Sq. Ft.

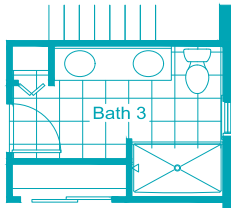


4 Bedrooms, 3 Baths, 2-Car Garage

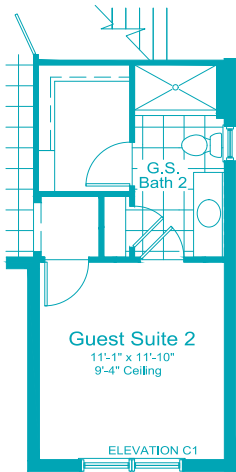
Living Area 3,486 Sq. Ft.
 Garage 454 Sq. Ft.
 Lanai 212 Sq. Ft.
 Entry 77 Sq. Ft.
 Total Area 4,229 Sq. Ft.



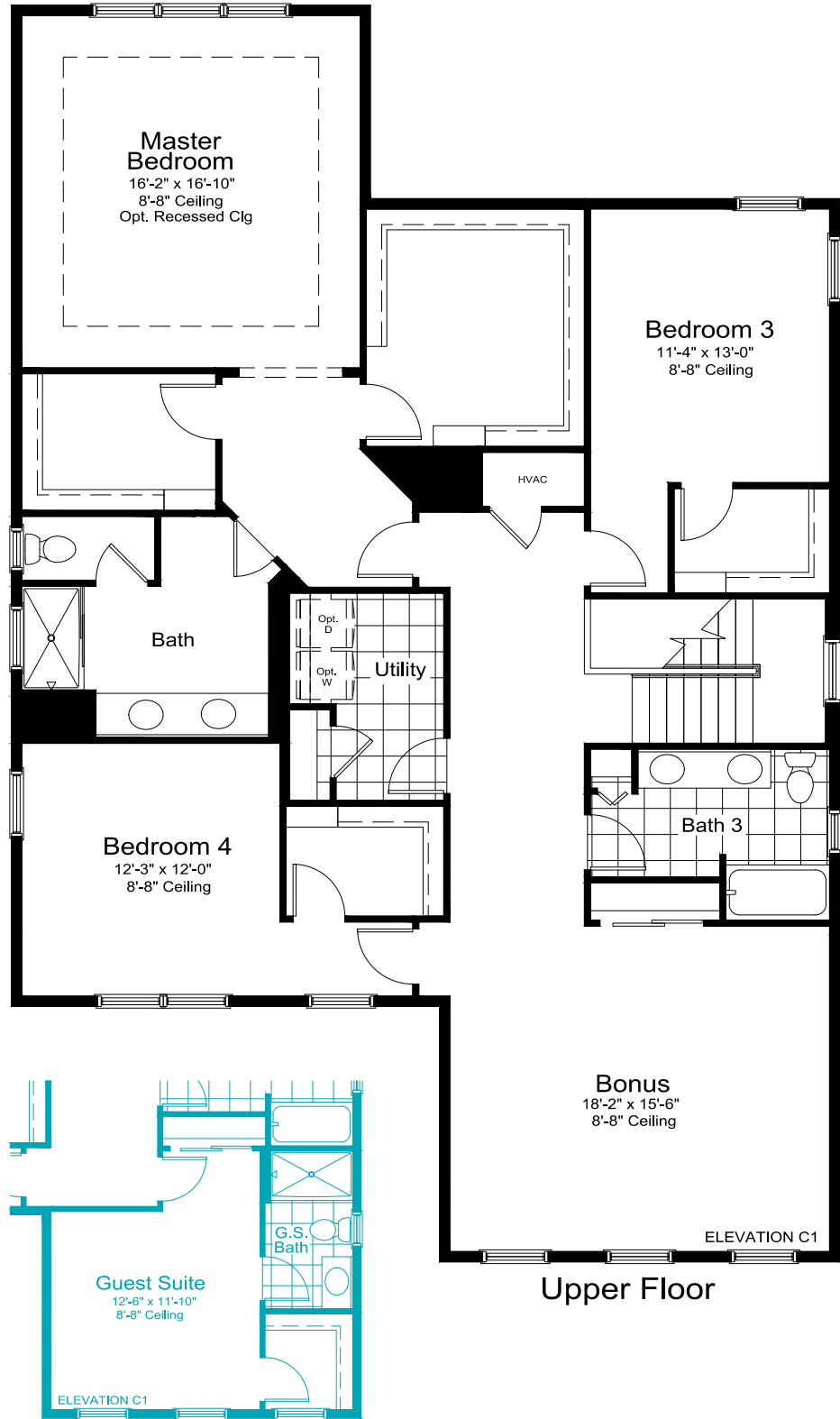
Master Bath Linen Option



Bath 3 Shower Option



Opt Guest 2 Suite ilo Bed 2/ Bath 2
 (Must Select Opt Pwd Bath with this Opt)



Upper Floor



Opt Guest Suite ilo Bonus Room



**CELEBRATION
HOME SERIES**



SKYSAIL



NI-1



FM-1



C-1

ARTISTRY

3,486 Sq Ft

2 Story

4 - 5 Beds

3 - 4.5 Baths

2-Car Garage

CELEBRATION SERIES FEATURES



SKYSAIL

SOUTHWEST FLORIDA'S MOST EXPERIENCED BUILDER

- Over 50 years of building award-winning homes
- 110 successful communities
- Over 20,000 homes built
- Dedicated customer care team
- Personalized Neal Design Gallery selection session
- 10-year full structural warranty
- 1, 6 and 11 month warranty service inspections available
- 2-year mechanical warranty
- Highest customer care satisfaction rating

NEIGHBORHOOD FEATURES

- 246 acres of lakes offering beautiful waterfront views
- 2 dog parks, 3 community event lawns, a lakehouse and a wellness center
- 3-mile perimeter trail
- Resort-style pool, lap pool and a spa
- A fishing pier, 8 pickleball and 2 tennis courts plus an outdoor gaming area with ping-pong and checker tables
- Easy access to Paradise Coast Sports Complex, a premier sports and special events venue

AWARD-WINNING DESIGN FEATURES

- Choice of custom-designed Tuscan, Northern Italian, Coastal, and Florida Modern elevations
- Decorative architectural details and shutters per plan
- Designer-selected exterior color palettes
- Professionally designed landscape package
- Professional in-house design service
- Neal Design Gallery offers choices for personalization of your home
- Exterior textured wall finish with siding OR banding and accents per plan
- The proven quality, service, and integrity of Neal Communities

LUXURY FEATURES

- Textured finish on walls and ceiling
- Classic colonial moldings
- 3-1/4" colonial baseboards
- Colonial windows (in select locations)
- Decorative coach lights
- Solid Surface window sills per plan
- Stylish lever door hardware
- Classic 2-panel interior doors
- Gutters included on sides per plan
- Professionally landscaped home site including mulch and automatic irrigation system
- Spacious closets with ventilated shelving (per plan)
- Plush, stain-resistant wall-to-wall carpeting in designer colors in areas per plan
- Long-lasting 17" ceramic tile floors in foyer, kitchen, baths and utility
- Air-conditioned laundry area with washer/dryer connections
- Painted garage floor
- Paver entry, walk, drive and lanai

QUALITY KITCHEN FEATURES

- General Electric stainless steel appliance package:
 - 5-year General Electric warranty
 - Over-the-range microwave
 - Refrigerator
 - Gas range
 - Dishwasher
- Moen 1/2 HP disposal
- 42" upper recessed panel wood veneer cabinets with stylish hardware
- Cabinet crown molding and bumped cabinet at microwave/hood
- Granite countertops - choice of value colors
- Stainless steel undermount sink
- Chrome single-handle faucet
- Spacious pantry for additional storage per plan



CELEBRATION SERIES FEATURES



SKYSAIL

LUXURY BATH FEATURES

- Corian white countertops with integral sinks and eased edge in baths
- Ceramic tile walls and glass shower enclosure in master bath per plan
- Elongated white water closet
- Recessed panel wood veneer cabinets with stylish hardware (Timberlake)
- Privacy water closet in master bath per plan
- Full-width vanity mirrors
- Chrome single lever faucets
- Water resistant drywall in all wet areas
- Towel bars and paper holders per plan
- Designer vanity lights
- White tub in guest bath
- Deco mirrored medicine cabinets per plan
- Outside vented exhaust fans in all baths

QUALITY CONSTRUCTION FEATURES

- Professionally-engineered structural components
- Concrete block construction (first floor only)
- Maintenance-free soffit and fascia
- Two conveniently located exterior hose bibs
- Steel storm panels per plan
- PEX water lines throughout
- Roof with concrete roof tiles
- Five-year exterior paint warranty
- Raised-panel overhead garage door with operator and remote controls, style per elevation

ENERGY SAVING FEATURES

- Insulated Low-E double glazed windows and sliding glass doors
- Natural gas piping per plan
- R-38 ceiling insulation
- Premium fiberglass insulated entry door with weather stripping
- Energy-efficient air conditioning system (SEER rating varies per plan)
- Insulated heating and cooling ductwork
- All air conditioning ductwork 3rd party tested by a Class 1 Energy Rater - certified to be substantially leak free
- 50 gallon gas or electric water heater per plan
- Energy efficient lighting per plan

QUALITY ELECTRIC FEATURES

- Decora light switches throughout
- Decorator light fixture in foyer
- All copper wiring from panel box
- Hardwired smoke detectors with battery backup
- Prewired for ceiling fans - choice of three locations
- Arc prevention circuits in bedrooms
- GFI safety outlets in all wet areas
- GFI exterior outlets per plan



SMART HOME PACKAGE

- Smart thermostat with Z-wave technology
- Smart entry door deadbolt with Z-wave technology
- Connected HD video doorbell
- Smart hub to connect Z-wave devices
- Structured wiring system to include five (5) Cat 5 phone/data outlets (choice of locations)
- One wireless access point prewire

4056 SkySail Drive, Naples, FL 34120 | 239.990.2125 | SkySailFL.com

