

**CELEBRATION
HOME SERIES**



SKYSAIL



C-1



FM-1



NI-1

TRIUMPH

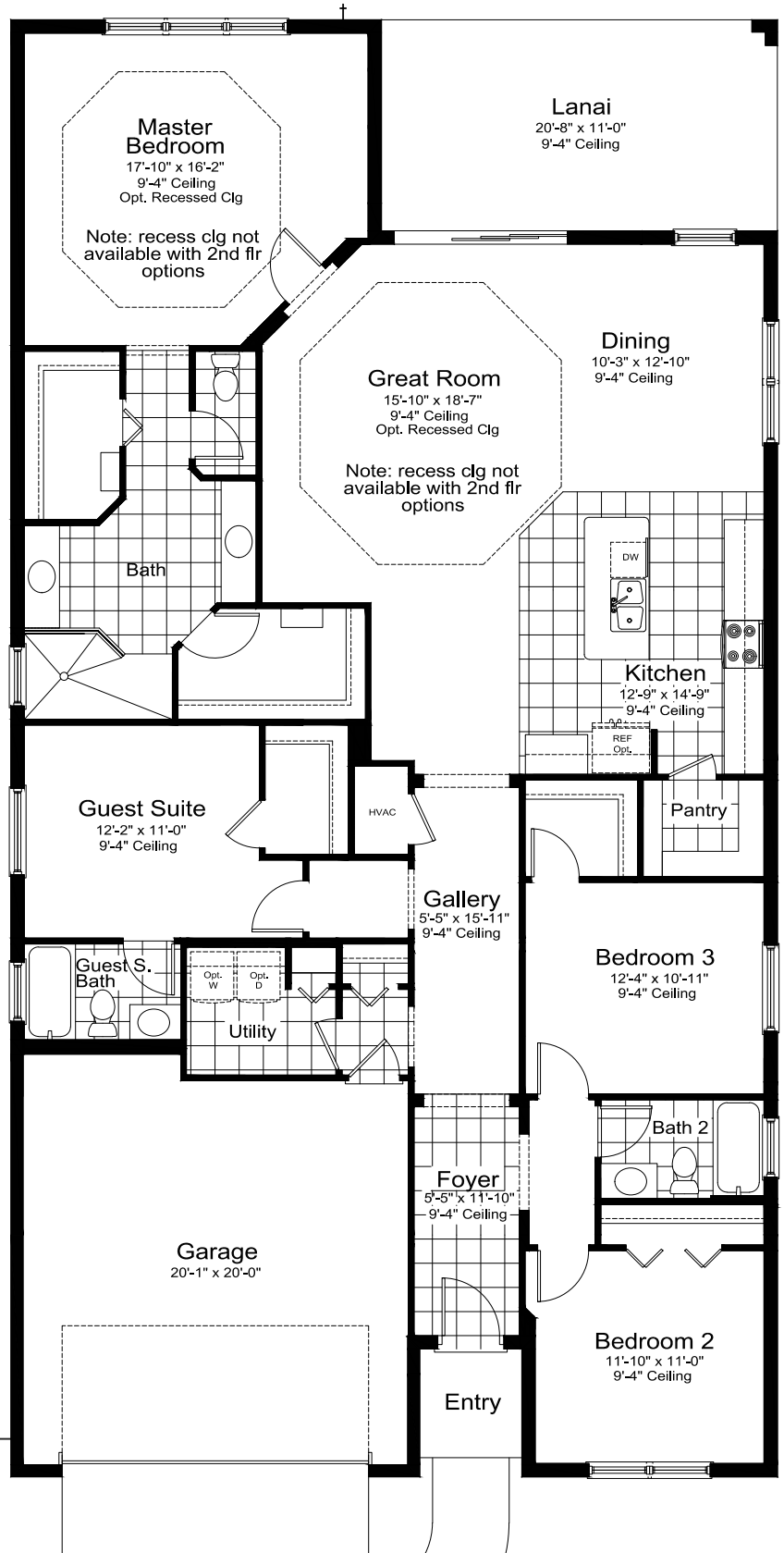
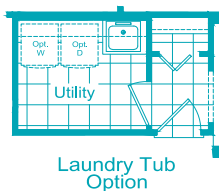
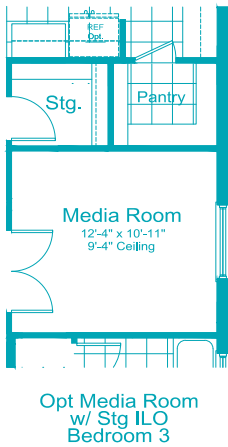
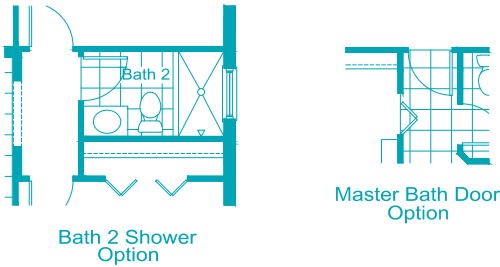
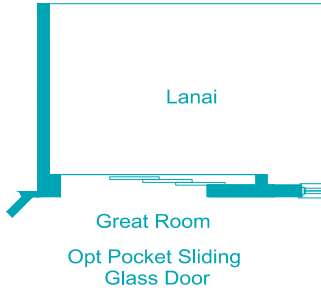
2,332 Sq Ft
1 - 2 Story
4 - 5 Beds
3 - 4.5 Baths
Guest Suite
2-Car Garage

Elevation C-1

TRIUMPH

4 Bedrooms, 3 Baths, Guest Suite,
2-Car Garage

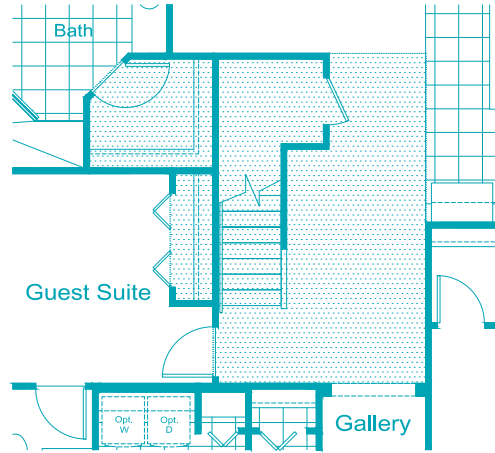
Living Area 2,332 Sq. Ft.
Garage 445 Sq. Ft.
Lanai 228 Sq. Ft.
Entry 30 Sq. Ft.
Total Area 3,035 Sq. Ft.



©2023 Neal Communities, Lakewood Ranch, Florida. All rights reserved. Neal Communities reserves the right to change elevations, and specifications without notice. All renderings and maps are an artist's conception, and are not intended to be an actual depiction of the buildings, fencing, walks, driveways or landscaping. All dimensions have been calculated from architectural drawings and may be subject to minor variations during construction. Product selections can change at any time due to availability in the current marketplace. This brochure is for informational purposes only, and should not be the sole basis of a decision to purchase any property. Please see our sales representatives with any questions. We do business in accordance with the Federal Fair Housing Law. CBC 1256375. (10.26.23)

4 Bedrooms, 3 Baths, Guest Suite,
2-Car Garage

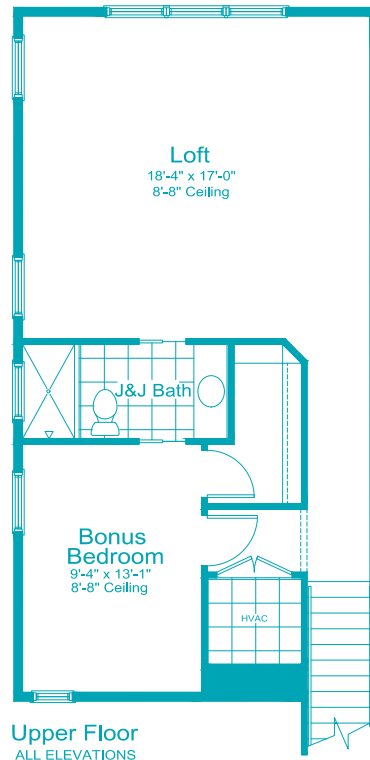
Living Area 2,332 Sq. Ft.
Garage 445 Sq. Ft.
Lanai 228 Sq. Ft.
Entry 30 Sq. Ft.
Total Area 3,035 Sq. Ft.



1st Floor when Bonus Room Opt selected
(hatched area represents area changed when adding opt bonus room)

ALL ELEVATIONS

1st FLOOR	2332 S.F.
OPT BONUS	687 S.F.
TOTAL LIVING:	3019 S.F.



Upper Floor W/ Loft, Bonus Bedroom & Jack and Jill Bath Opt

