

**CELEBRATION
HOME SERIES**



SKYSAIL



SKYSAIL

4056 SkySail Drive
Naples, FL 34120
239.990.2125 | SkySailFL.com



NEALCOMMUNITIES
Where You Live Matters



©2024 Neal Communities, Lakewood Ranch, Florida. All rights reserved. Neal Communities reserves the right to change elevations, and specifications without notice. All renderings and maps are an artist's conception, and are not intended to be an actual depiction of the buildings, fencing, walks, driveways or landscaping. All dimensions have been calculated from architectural drawings and may be subject to minor variations during construction. Product selections can change at any time due to availability in the current marketplace. This brochure is for informational purposes only, and should not be the sole basis of a decision to purchase any property. Please see our sales representatives with any questions. We do business in accordance with the Federal Fair Housing Law. CBC 1256375. (05.13.24)



NI-1



C-1



FM-1

LIGHTHOUSE

2,601 Sq Ft
2 Story
4 Beds
3 Baths
Loft
3-Car Garage

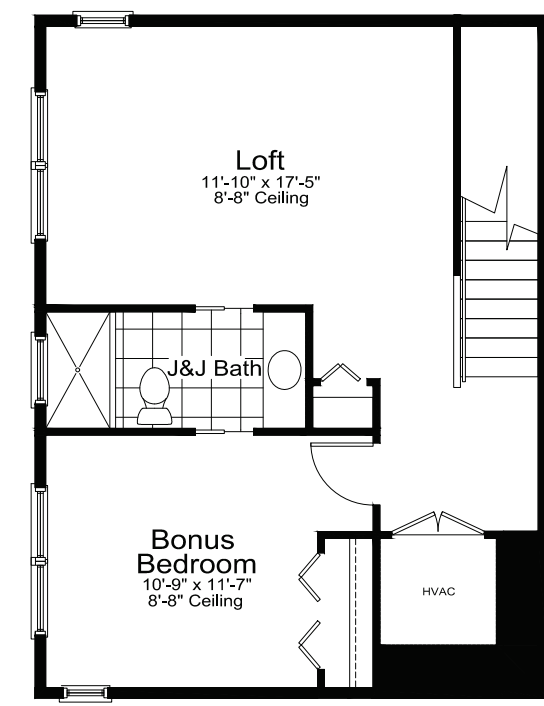
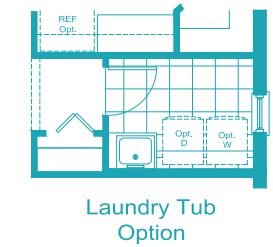
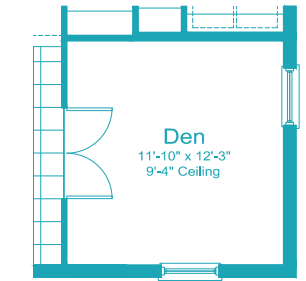
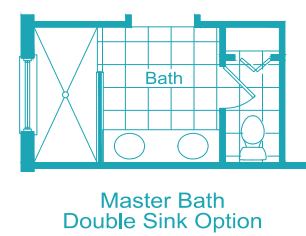
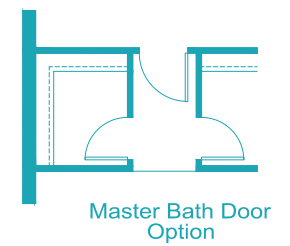
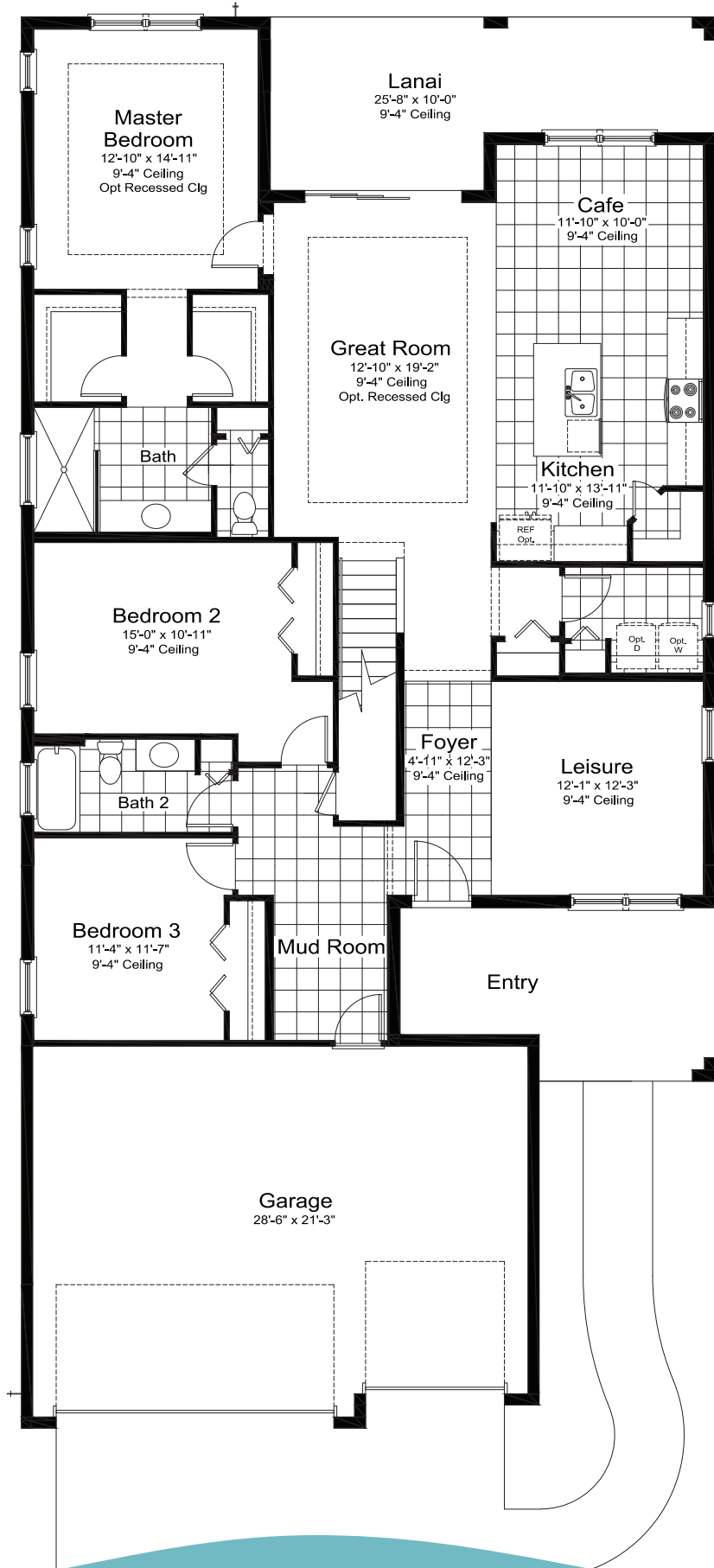
NEALCOMMUNITIES
Where You Live Matters

Elevation NI-1

LIGHTHOUSE

4 Bedrooms, 3 Baths, Loft,
3-Car Garage

Living Area 2,601 Sq. Ft.
Garage 649 Sq. Ft.
Lanai 212 Sq. Ft.
Entry 160 Sq. Ft.
Total Area 3,622 Sq. Ft.



2nd Floor Floor Plan
2ND FLOOR 587 S.F.

